



Monitoring and Evaluation Framework for One Health Programme in Kerala



Department of Health & Family Welfare
Govt. of Kerala

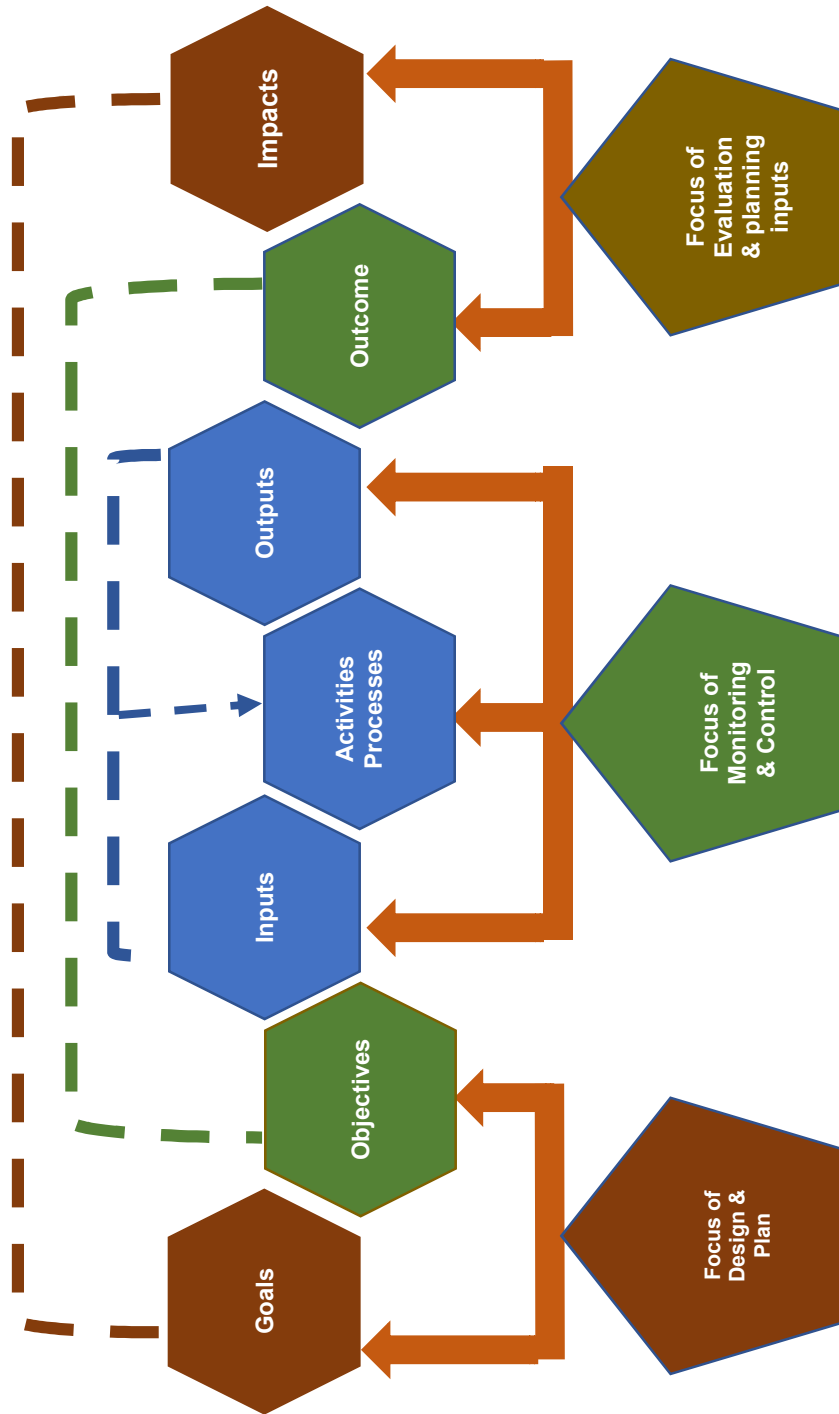
Kerala.HEALTH

Monitoring and Evaluation Framework for One Health Programme in Kerala

Department of Health & Family Welfare
Govt. of Kerala

Kerala.HEALTH

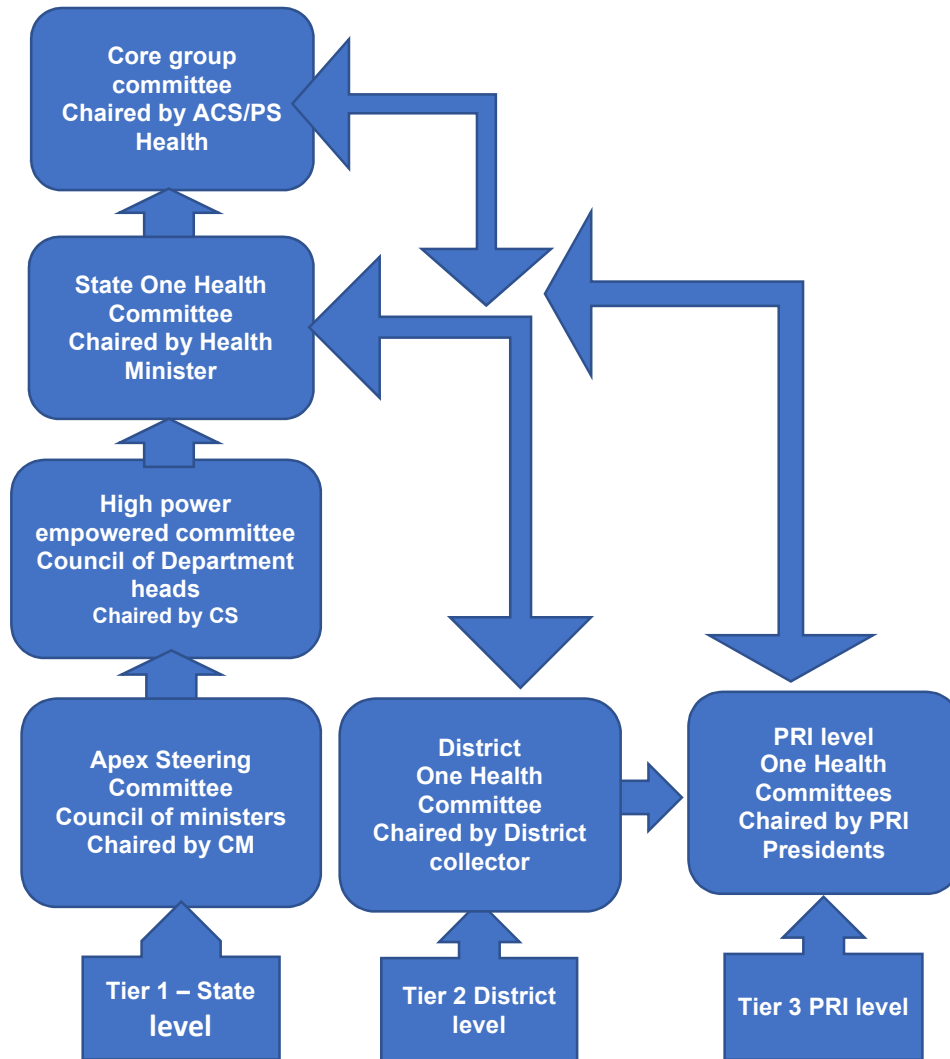
In every programme and project, monitoring & control determines the quality of inputs, processes & outputs and evaluation identifies the expected outcome and potential impacts. The below given diagram reveals the interconnection of the same.



This monitoring framework is developed for the state one health programme to be implemented in all the districts of Kerala. Department of Health & Family welfare will be the nodal agency for the one health programme and will be operationalized in coordination with other line departments. Evaluations will be conducted engaging external agencies or consultants once in two years.

One Health Programme Governance System

Considering the need of interdepartmental and inter sectoral collaboration in planning and operationalization of One Health programme a multilevel (state, district and PRI) governance system is visualized to plan and operationalize the programme.



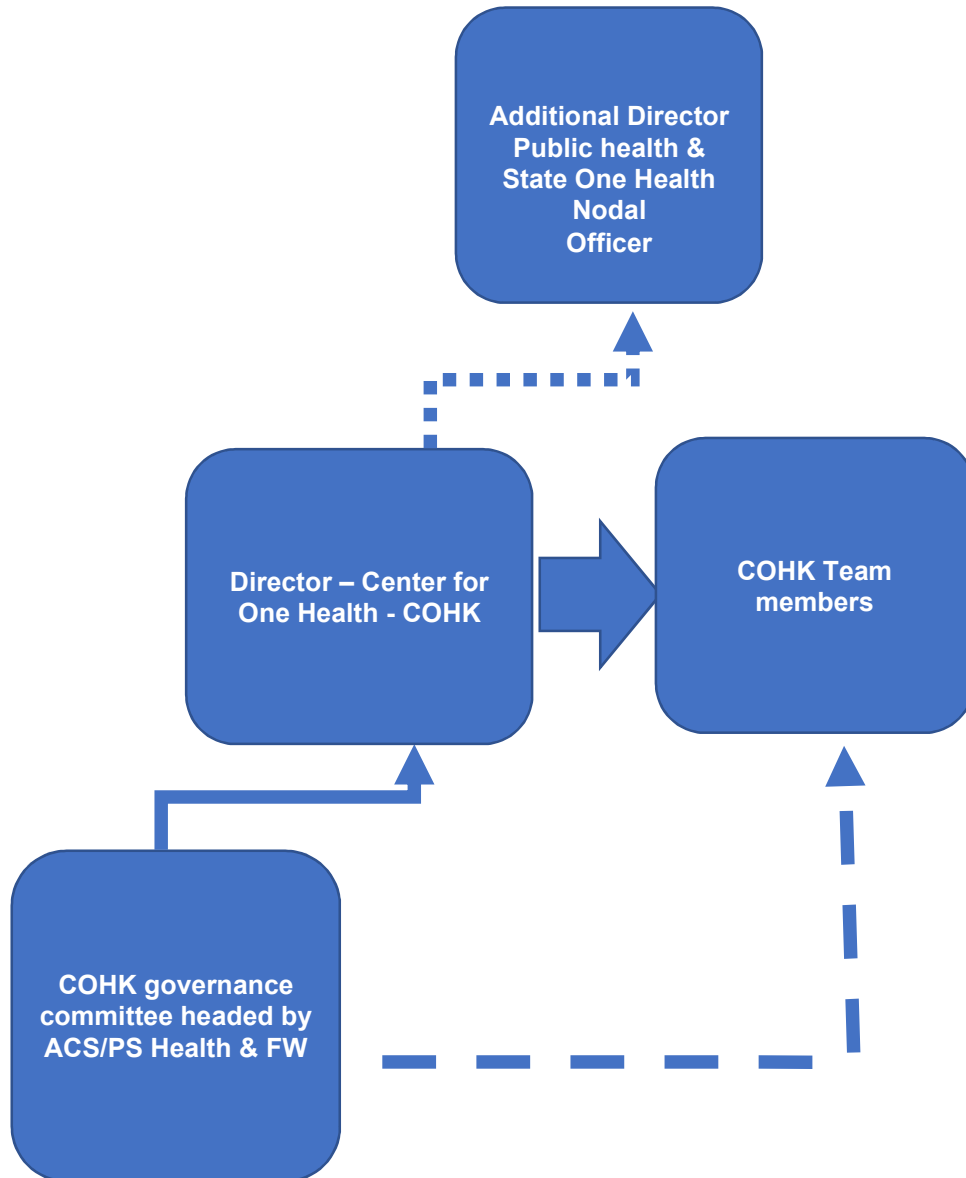
Programme Management systems

State level – Center for One Health – Kerala with Director as head of the Institution supported by programme lead and other team members. The core responsibility is to plan and operationalize one health programme in the state as per the policy decisions. The functional units are:



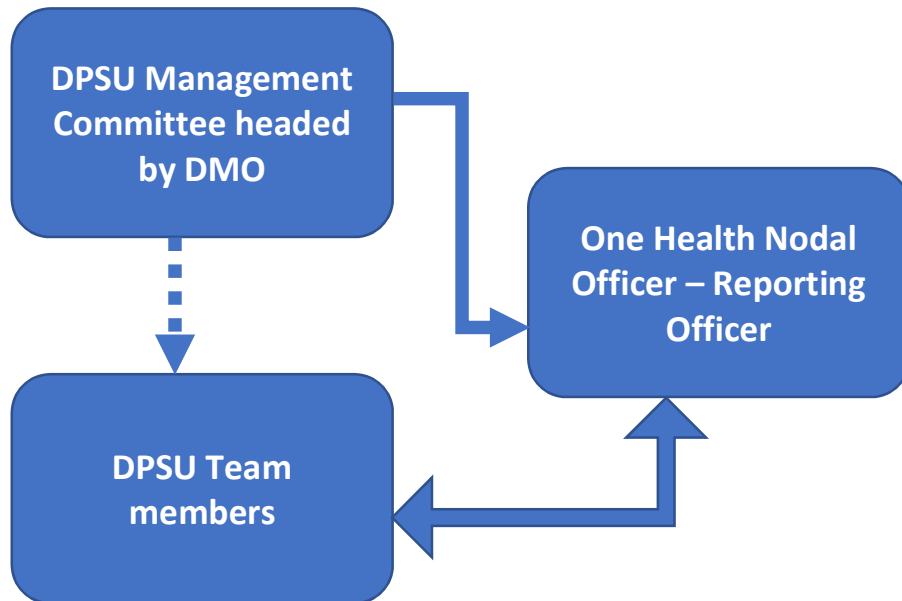
Structure of COHK

COHK is state level management system for one health programme implementation established under Directorate of Health Services. This will be focusing on operationalization of one health programme initially in the four Pamban districts and later on will be expanded to other districts in Kerala. The governance of COHK is vested with a committee formed at the state level. The structure of COHK is given below:



District Programme Support Units (DPSUs)

District Programme Support Units will be established in all the districts to facilitate the one health programme implementation at the district level as well as PRI level. The structure of the DPSU is given below:

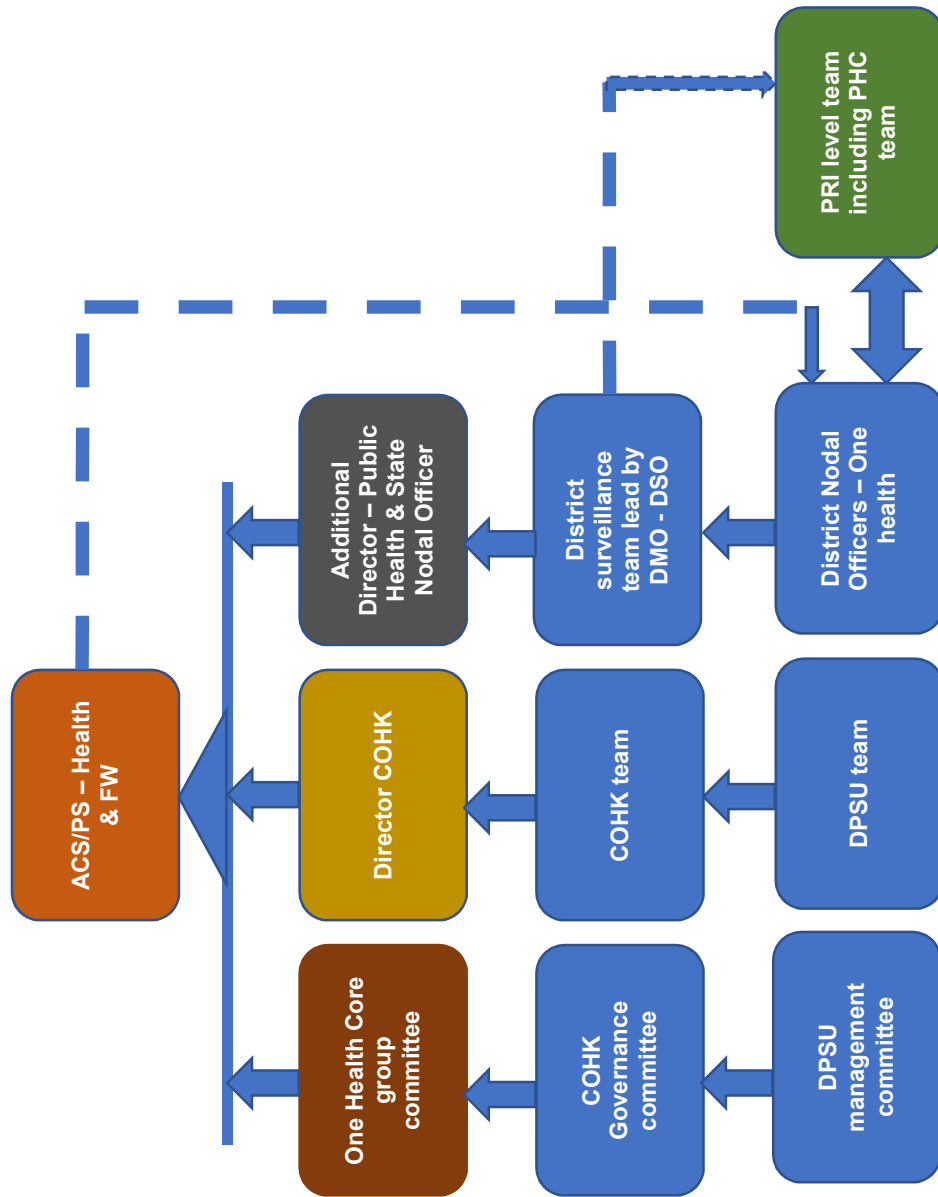


DPSU management committee headed by DMO

Nodal Officer – Reporting officer

DPSU team – Manager, Public health specialist, Communication Specialist, Capacity building specialist and 2 support staff

Review and reporting structure – One Health Programme, Kerala



ACS/PS review COHK, Core Group and DHS nodal officer on a monthly basis.

COHK reviews district level activities on a weekly basis.

District level core team with the support of Nodal officer review the activities on a weekly basis.

Nodal officers review PRI level activity on a daily basis.

PRI review PHC activity on a weekly basis.

The state level three units reports to ACS/PS on a monthly basis. District level units report to Director COHK and State OH nodal officer. PHC team report to District nodal officer/DMO/DSO and PRI. DPSU reports to district nodal officer and COHK.

Monitoring stream – District level

Every month each district prepares monthly plans with specific result indicators based on the approved annual plans and submit it to COHK and DHS. The monitoring and reviews will be based on the plans submitted.



District level	
One Health Committee	One Health Committee organize periodical meetings once in 6 months
DMO/DSO Surveillance & response team- (interdepartmental team)	DMO reviews one health programme along with MO meetings once in a month
One Health Nodal Officer	Nodal Officers along with DPSU reviews district and PRI level work on a weekly basis
DPSU team	Nodal officer send reports to state office on a monthly basis endorsed by DMO & DSO DPSU team reports to Nodal officer at the district level DPSU team send reports to COHK on weekly basis
PRI one health team PHC level team Panchayat Mentor – HI from health department	PRI team and PHC team reports one health activities on a weekly basis to Nodal officer supported by DPSU
Community mentors/Volunteers	PRI mentor on a regular basis communicate to community mentors/volunteers and report the same to PRI and PHC MO ensures the filed visit of PRI one health mentor's field visits and reporting

Monitoring stream – state level

The state level DHS team in association with COHK and in consultation with various stakeholders, prepares state annual action plan for One Health programme and submit it to concerned authorities and get the approvals. In the plan the key outputs, result indicators, time frame and budget will be specified. The state team also provides appropriate guidance to the district teams to develop the district plans. Monitoring will be periodical and against the approved plans. Emergency plans will be developed based on the felt needs and management responsibilities will be shared with districts and with other departments on a need-based manner.

State Level				
	<p>One health Committee approves annual plan and reviews the progress once in 6 months</p> <p>The Committee also reviews the interdepartmental coordination and provide facilitative support</p>	<p>Once in a month ACS/PS reviews the progress of the programme</p> <p>COHK activities will be reviewed every fortnightly</p>	<p>COHK reports to ACS/PS on a fortnightly basis</p> <p>DHS team reports to ACS/PS on a weekly basis which includes financial matters</p>	<p>In the state SMO conference one health programme will be an agenda and it will be reviewed along with other activities</p>
	<p>State level One Health Committee</p>	<p>ACS/PS health & family welfare</p> <p>One Health core group – state level</p>	<p>COHK</p> <p>DHS team with state Nodal officer</p>	<p>District teams</p>

Reporting method and Sequence

Monthly reporting

Weekly planning & reporting

District medical officers meeting – add one health activity report in the usual reporting format

State – MO conference – reporting format need to be included

PRI mentors reporting on a monthly format to district mentors

District mentors report to Nodal officers and nodal officers to DMO and to state officers

New engagement – Monthly frequency

A new exercise shall be introduced at district level which will be conducted on a monthly basis. It shall be called as “Concurrent Disease Mapping Exercise (CDME)”. It will be carried out at PHC level on a monthly basis involving other departments also. A reporting format shall be developed and will be shared with DMO/DSO on a monthly basis and further analysis shall be done. This reporting system shall be included in the routine monthly meetings at state level or district level.

In this MDME, the community volunteers shall be involved on a regular basis and ward level discussions shall be organized by PRI level one health mentors. The key discussion points and other analysis also shall be shared with PHC Medical officers and through them it will go to district level systems.

Regular activities – CDME, Prevention education, Support to interventions

Monitoring – How often – frequency of carrying out the activities and results or outputs achieved

Monitoring systems for One Health Mentors

This is a system for recording the basic details about the Local Self Governing Institutions (LSGI) with regard to one health and to assess the progress of one health activities in a LSGI. This system also focuses on community volunteers' coordination and their participation in community based surveillance and response in the LSGI. This system is supervised by District nodal officers in each district and provide ongoing support to the one health mentors to ensure functioning of CBS&R in each LSGIs in the district. Three formats are included in the monitoring system which has to be completed and reported on a weekly basis.

1. Basic information about the LSGI with regard to one health & its functions (one time information and periodic updating)
2. Status of progress of work of one health in the LSGI (Once in a week)
3. Assessment format for district mentors (Once in a month)

One Health Mentors/District mentors are expected to complete the first format in the initial stage of planning and second format needs to be completed on a weekly basis in accordance with the given indicators.

Pre-requirements

The One health mentors have to report to the District One Health Nodal officers on a day to day basis. A formal WhatsApp group involving DSO, District One Health Nodal officer and district mentors/one health mentors will be formed and will be administered by the District nodal officer or and DSO. Functions of the group are as follows

- Each One Health mentors/District mentors upload their daily plans on a day to day basis
- Each One Health mentors/district mentors upload brief note on their daily achievements which will be followed by relevant photos
- District nodal officer go through the plan and note on achievements on a day to day basis and give need-based suggestions or feedback.

- DSO provides supervisory notes/suggestions/feedback on a periodical basis
- Using these information and monitoring format information, the district nodal officer prepares a report in the given format and submit it to State (to Center for One Health Kerala - COHK)

Each /One health mentor has to form a LSGI level WhatsApp group of community mentors/Volunteers and provide support on a regular basis to ensure functioning of CBS&R in the concerned LSGI

District mentors/One Health mentors also coordinate with LSGI members and concerned officials on a day to basis

One Health reporting has to be included as one of the agenda of district medical officers meeting and block level meeting. The same has to be included in the State medical officers meeting.

Format 1 – Basic information with regard to LSGI with regard to One Health

1. Name of the One health mentor		2. Name of the district	
3. Name of health block		4. Name of LSGI	
5. Number of wards in the LSGI		6. Contact details of LSGI and contact person including website and email ID. Also provide a scanned copy of LSGI map	
7. Total population in the LSGI	Male Female Total	8. Total households in the LSGI – If possible give it ward wise	
9. Contact details of PHC/FHC		10. Contact details of JAKs in the LSGI	
11. Number of Community mentors/ Volunteers enrolled in the LSGI		12. Number of public health team in the LSGI	MO Nursing staff JPHN PHN JHI HI MLSP
13. Status of One Health committee in LSGI	Not formed Formed Formed and functional	14. Details of Members of One Health committee	

**Format 2 - Status of progress of work of one health in the LSGI
(weekly basis)**

Name of the mentor		Date of reporting	
1. Name of health block visited		2. Names of LSGIs visited	
Names of CHC/THQH/DH visited in the week			
Name JAKs visited		Present status of CM/CV numbers (present CM/CV numbers in the LSGI – ward wise)	
Number of new CM/CV enrolled in the week		Status of social media group and number of members in the group	
Community volunteers met during the visit		CV orientation on one health and CBS conducted during the visit – give number of people attended	
Whether visited Veterinary Dispensary/Hospital during field visit (If yes, enter name)		Whether visited Krishi Bhavan during field visit (If yes, enter name)	
Whether visited office of other sectoral departments during field visit (If yes, enter name)		Departments consulted with during LSGI visit	
Departments consulted with during LSG visit (Please tick on the relevant lines)	1.Health, 2. Animal Husbandry, 3. Drugs Control, 4. Agriculture, 5. Fisheries, 6. Irrigation, 7. Water Authority 8. Food Safety, 9. Pollution Control Board, 10. Forest & Wildlife, 11 others (specify)		

Status of LSGI orientation on CBS		Status of LSGI governance committee for one health committee formation – whether resolution passed or not	
Status of One health committee meeting for CBS setting up		Status of coordination meetings held with NGO's, Faith Based Organisations and other Community Based Organisations at LSGI during the week – give number and place of programmes	
Whether review meetings conducted with CMs and CVs at LSGI level on date of visit		Whether preventive education programmes conducted at LSG level on date of visit.	
Whether Periodic Hazards and Risk Mapping (PHRM) Exercises conducted at LSGI during the week		Status of house visits by CM/CV in the week	
Number of events reported via CBS in last week		Number of interventions taken in response to CBS event reporting in the last week	
Details of any other activities done during LSGI visit			
Photo/photos/documentation of activities conducted is attached			

CBS monitoring system/Kerala/COHK/May 2025

**Format – 3 - Assessment format for One Health mentors
(Once in a month)**

This has to be completed by the Nodal officer along with the mentor on a monthly basis.

Name of the mentor		Name of health block and LSGIs assigned	
Number of days worked		Whether daily plans and evening briefing shared in the WhatsApp group	
Number of visits made to LSGIs		Key people met during the visit (specify number of times also)	
Details of PHC/CHC/THQH/DH visits		Details of OH committee meetings conducted	
Number of JAK visits		Number of CM/CV meetings completed	
Number of orientation programmes conducted for CM/CV		Number of preventive education programmes conducted	
Number of times took part in PHRMs		Number of house visits made	
Number of CSO meetings conducted or visited		Number of other department officials met/visited	
Number of events reported from the filed		Number of times took part in the responses	
Details of other activities			

CBS setting up & operationalization - status analysis format

Name of district		Name of the nodal officer	
Date of reporting		Total number of CM/CVs contacted in the period (only individual numbers – not cumulative)	

<i>Name of LSGI</i>	<i>No of visits made to the LSGI</i>	<i>LSGI committee passed the resolution or not</i>	<i>One health committee meeting conducted or not</i>	<i>CBS setting up completed or not</i>	<i>Status of updating of CM/CV list</i>	<i>Number of social media groups functional with CM/CV</i>	<i>Number of CM/CVs oriented</i>	<i>Number of events reported through CBS</i>	<i>Status of other activities</i>

Center For One Health Kerala(COHK)



September 2025